

Daniel Saidenberg Faculty Recital Series

Laurie Smukler, Violin
Gwen Krosnick, Cello
Qing Jiang, Piano



Juilliard



Photo by T. Charles Erickson

Support Scholarships

Scholarship support makes it possible for the school to continue to nurture the exceptional artists who go on to be the performers, educators, creators, and leaders that move the needle and broaden the stories that are told and heard through the performing arts.

With more than 90 percent of our students eligible to receive some measure of financial aid, scholarship funds are critical in enabling Juilliard to meet our students' needs.

To make a scholarship gift for College or Pre-College students, visit giving.juilliard.edu or contact Irene Elias at ielias@juilliard.edu or (212) 799-5000, ext. 309, to learn more.



The Juilliard School
presents

Laurie Smukler, Violin
Gwen Krosnick, Cello
Qing Jiang, Piano

Part of the Daniel Saidenberg Faculty Recital Series

Thursday, November 14, 2024, 6pm
Morse Hall

DMITRI SHOSTAKOVICH Piano Trio No. 2 in E Minor, Op. 67 (1943-44)
(1906–75) Andante—Moderato
 Allegro con brio
 Largo
 Allegretto—Adagio

Intermission

MIECZYŚLAW Piano Trio, Op. 24 (1945)
WEINBERG Prelude and Aria. Larghetto
(1919–96) Toccata. Allegro
 Poem. Moderato
 Finale. Allegro moderato

Performance time: approximately 1 hour and 20 minutes, including an intermission

Juilliard is committed to the diversity of our community and to fostering an environment that is inclusive, supportive, and welcoming to all. For information on our equity, diversity, inclusion, and belonging efforts, please visit our website at juilliard.edu/edib.



Large
Print

Please make certain that all electronic devices are turned off during the performance. The taking of photographs and the use of recording equipment are not permitted in this auditorium.

About the Artists

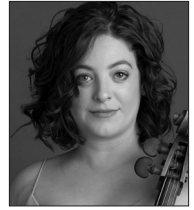


Laurie Smukler

Laurie Smukler (BM '77, violin; faculty 2013-present) enjoys a career that spans deeply involved chamber music collaborations, solo performances, artistic directing, and violin and chamber music teaching. Her regular concert appearances include recitals with her Juilliard faculty colleague, pianist Robert McDonald; chamber music as part of the Capital City Concerts series in Montpelier, Vermont; concertos with the young musicians of the Gifted Music School Conservatory in Salt Lake City; and, with another Juilliard faculty colleague, cellist Natasha Brofsky, New York City performances benefiting Music for Food. Smukler made her concerto debut with Cleveland Orchestra at age 14, performing Lalo's *Symphonie Espagnole*; in the decades since, she has appeared as a soloist in most of the great concerto repertoire. With her husband of more than 40 years, Ira Weller, Smukler was a founding member of the Mendelssohn String Quartet. During her eight years as first violinist, the quartet won the Young Concert Artists competition in 1981; presented concerts across the U.S.; and recorded works of Schoenberg, Dvořák, Mendelssohn, and Mozart. Smukler and Weller also collaborated for many years on the Collection in Concert, a chamber music series at the Morgan Library that featured repertoire whose original manuscripts were part of the institution's extensive collection. Since 1997, Smukler has taught at Kneisel Hall Chamber Music School and Festival in Blue Hill, Maine; she became artistic director in 2016. Highlights there include duo and trio collaborations with cellist Joel Krosnick and pianist Seymour Lipkin as well as with cellist Gwen Krosnick and pianist Qing Jiang. Smukler has expanded the festival by presenting Continuum concerts featuring collaborations between Kneisel Hall faculty and alumni; inviting an Alexander Technique practitioner to campus; establishing an annual Music for Food concert to support the food pantry in Blue Hill; and starting a series, Composers Now, which brings a major living composer for a residency each summer. At Juilliard, Smukler works with an extraordinary class of undergraduate and graduate student violinists; coaches chamber music groups; and co-directs the String Quartet Survey for entering first-year students. Prior to Juilliard, she taught at the Manhattan School of Music, Mannes, SUNY Purchase, and the Bard Conservatory of Music. Smukler grew up in Cleveland with an attorney father and a visual artist mother. Her early violin studies were with pedagogue Margaret Randall; she coached chamber music with members of the original Cleveland Quartet and grew up hearing performances by the Cleveland Orchestra, conducted by George Szell. Smukler's influences include Ivan Galamian, Donald Weilerstein, Josef Gingold, Rudolf Serkin, and Robert Mann.

Gwen Krosnick

Cellist Gwen Krosnick has appeared across the world as a recitalist, chamber musician, and joyous advocate for music. Her career spans devoted quartet and trio playing, solo cello recitals, teaching at major universities and chamber music festivals, writing on music, and countless premieres and performances of contemporary music. Krosnick is known for her ecstatic and luminous voice; for her deep, burnished palette of sounds at the cello; and for a fierce technique that etches her gestures, colors, and bass lines with arresting conviction. Highlights of Krosnick's upcoming seasons include solo cello recitals focused on works by Tania León, Ralph Shapey, Donald Martino, James Lee III, and Dorothy Rudd Moore; quartet tours in the U.S. and Europe; premieres of new works by Joan Tower, Victoria Bond, and Christian Wolff; and—with colleagues Laurie Smukler and Qing Jiang—performing and recording the piano trios of Weinberg and Shostakovich. Krosnick is the cellist of the Cassatt String Quartet (CSQ), with which she specializes in joyful reimaginings of standard quartet repertoire and a vast range of contemporary music—with particular emphasis on the music of women and other composers whose backgrounds have been underrepresented on classical music stages. Prior to joining the CSQ, Krosnick was the founding cellist of Trio Cleonice, with which she performed across the U.S., Europe, and Asia, from 2008 to 2016. Krosnick has served on the faculties of the Oberlin Conservatory of Music, New England Conservatory preparatory division, and Junior Greenwood, and she has given master classes at Eastman, Oberlin, Cleveland Institute, and Duke. In the fall, she joined the faculty of Columbia University's music performance program; she will spend the spring semester as visiting professor of cello at Oberlin. During the summers, Krosnick teaches at Kneisel Hall in Maine, of which she is an alum and where she has served as artist-faculty since 2019.





Qing Jiang

Chinese-born artist Qing Jiang (MM '07, piano) enjoys a diverse career in solo, chamber, and contemporary music. As a concerto soloist, Jiang performed with the Britten-Pears Orchestra under Oliver Knussen and the Lanzhou Symphony under conductor Zushan Bian as well as with the Chattanooga Symphony, Williamsport Symphony Orchestra, and many festival and collegiate orchestras. A passionate chamber musician, Jiang has collaborated for many years alongside duo partners Ying Xue, Natasha Brofsky, and Michael Kannen as well as with trio partners Laurie Smukler and Gwen Krosnick. Jiang has performed with Itzhak Perlman, Natalie Clein, Gilbert Kalish, David Shifrin, Joel Krosnick, Joel Smirnoff, Anthony Marwood, and with the Juilliard, Shanghai, Parker, Jasper, Aeolus, and Piatti quartets. In 2016 she performed on a six-city China tour with Smukler, Natasha Brofsky, and Roger Tapping. Jiang has served as a faculty artist at the Kneisel Hall Chamber Music School and Festival since 2016 as well as Yellow Barn and Interlochen. She has also appeared at Music@Menlo, the Aldeburgh Festival, Ravinia, Perlman Music Program, Garth Newel, and Aspen. Versatile in style and interests, Jiang has performed with the Britten-Pears contemporary ensemble, New Juilliard Ensemble, and Aspen percussion ensemble, and she worked closely with composers Jennifer Higdon, Juri Seo, Jörg Widmann, Brett Dean, and Eric Nathan to prepare performances of their work. Jiang's debut solo album, *Dreamed Landscapes* (Albany), features works by Thomas Adès and Daniel Temkin, and her next album project centers on etudes by Claude Debussy, Zhou Tian, Colin Matthews, and others. Having started piano studies with her mother at age 3, Jiang holds degrees from Arizona State University and the New England Conservatory (NEC) as well as Juilliard. Her principal teachers include Shuxing Zhen, Caio Pagano, Robert McDonald, Wha-kyung Byun, and Patricia Zander. Committed to mentoring the next generation of musicians, Jiang has taught at NEC, NEC precollege, the Curtis Institute of Music, and Yellow Barn's Young Artist Program. She is an associate professor of music at Bucknell University, where she co-chairs the music department and curates the Bucknell Piano Series.

Juilliard Board of Trustees and Administration

BOARD OF TRUSTEES

Vincent A. Mai, *Chair*
Julie Choi, *Vice Chair*
Laura Linney, *Vice Chair*

Jon Batiste
Joshua Black
J. Powell Brown
Jeffrey C. Campbell
Mary Schmidt Campbell
Rondi Charleston
Virginia Gambale
Jeffrey L. Gates
Joan W. Harris
Edward E. Johnson Jr.
Jerold Kayden
Philippe Khuong-Huu
J. Christopher Kojima
Teresa E. Lindsay
Ellen Marcus

Constance Marks
Stephanie Palmer McClelland
Christina McInerney
Anne Akiko Meyers
Lester S. Morse Jr.
Rebecca Morse
Tram Nguyen
Susan W. Rose
Jeffrey Seller
D. Ellen Shuman
Deborah Simon
Sarah Billinghamurst Solomon
William E. "Wes" Stricker MD
Yael Taqqu
Laurie M. Tisch
Robert Weissenstein
Damian Woetzel
Camille Zamora

TRUSTEES EMERITI

Kenneth S. Davidson
Keith R. Gollust
Bruce Kovner, *Chair Emeritus*

Nancy A. Marks
Katheryn C. Patterson

Joseph W. Polisi, *President Emeritus*

EXECUTIVE OFFICERS AND SENIOR ADMINISTRATION

Damian Woetzel, *President*

Office of the President

Jazmin Morales, *Chief of Staff*
Kathryn Kozlark, *Artistic Producer and Director for Creative Enterprise*
Ria DasGupta, *Director, Equity, Diversity, Inclusion, and Belonging*
Nadia Sirota, *Creative Associate at Large*

Office of the Provost

Adam Meyer, *Provost*
Kirstin Ek, *Vice Provost for Academic Affairs*
Amy Evans, *Associate Provost for Academic Affairs and Assessment*
Katie Friis, *Associate Provost for Academic Affairs and Curriculum*
Katherine Gertson, *Assistant Dean and Registrar*
Kathleen Tesar, *Associate Dean for Enrollment Management*
Rachel Kunce, *Director of Music Admissions*
John-Morgan Bush, *Dean of Juilliard Extension*
Yassmeen Angarola, *Administrative Director*

Dance Division

Alicia Graf Mack, *Dean and Director of the Dance Division*
Alexandra Tweedley, *Administrative Director*
Mario Alberto Zambrano, *Associate Director*

Drama Division

Evan Yionoulis, *Richard Rodgers Dean and Director of the Drama Division*
Derrick Sanders, *Associate Director*
Katherine Hood, *Managing Director*
Lindsey Alexander, *Director of Artistic and Curricular Planning*

Music Division

David Serkin Ludwig, *Dean and Director of the Music Division*
A. Joseph Soucy, *Associate Dean of Orchestral Studies*
Merry Peckham, *Assistant Dean and Director of Chamber Music*
Fadva Hayes, *Assistant Dean*
Joanna Trebelhorn, *Senior Director of Performance Operations and External Venue Relations*
Annabelle Venier, *Associate Director of Artistic Programs*
Eric Oatts, *Administrative Director*
Mario Irgec, *Chief Piano Technician*
Ara Guzelimian, *Special Advisor*

Historical Performance

Robert Mealy, *Director of Historical Performance*
Karin Brookes, *Administrative Director*

Ellen and James S. Marcus Institute for Vocal Arts

Brian Zeger, *Artistic Director of the Ellen and James S. Marcus Institute for Vocal Arts*
Adam Nielsen, *Associate Artistic Director, Master of Music and Graduate Diploma Program*
Justina Lee, *Associate Artistic Director, Undergraduate Program*
Andrew Gaines, *Administrative Director*

Jazz

Wynton Marsalis, *Director of Juilliard Jazz*
Aaron Flagg, *Chair and Associate Director*

Preparatory Division

Weston Sprott, *Dean and Director of the Preparatory Division*
Anthony McGill, *Artistic Director, Music Advancement Program*
Yoheved Kaplinsky, *Artistic Advisor, Pre-College*
Rebecca Reuter, *Administrative Director, Music Advancement Program*
Ekaterina Lawson, *Director of Admissions and Academic Affairs, Pre-College*
Anna Royzman, *Director of Performance Activities, Pre-College*

Lila Acheson Wallace Library and Doctoral Fellows Program

Jane Gottlieb, *Vice President for Library and Information Resources; Director of the C.V. Starr Doctoral Fellows Program*
Jeni Dahmus Farah, *Director, Archives*
Alan Klein, *Director of Library Technical Services*

Student Development

Barrett Hipes, *Vice Provost and Dean of Student Development*
Sabrina Tanbara, *Associate Dean of Student Development*
Alice Jones, *Assistant Dean of Community Engagement and Career Services*
Vanessa Valenzuela, *Assistant Dean of International Advisement and Student Diversity Initiatives*
William Buse, *Director of Counseling Services*
Milo Campanella, *Director of Residence Life*
Nathan Fischer, *Director of Career Services*
Ian Prince, *Business Development Director, Career Services*
Adrian Rodriguez, *Director of Community Engagement*
Howard Rosenberg MD, *Medical Director*
Dan Stokes, *Director of Academic Support and Disability Services*
Beth Tchow, *Administrative Director of Health and Counseling Services*

Development

Jonah Nigh, *Vice President and Chief Advancement Officer*
Michael Oliver, *Senior Director of Principal and Major Gifts*
Lori Padua, *Director of Planned Giving*
Rebecca Vaccarelli, *Director of Alumni Relations*
Kim Furano, *Director of Institutional Relations*
Robyn Calmann, *Director of Special Events*
Toniya Katsarov, *Director of Development Operations*

Communications and Marketing

Mary Caraccioli, *Vice President of Communications and Marketing*
Kaitlyn Zafonte, *Senior Director of Content Strategy*
Susan Jackson, *Editorial Director*
Jose Lechuga, *Website Director*
Anna Sayer, *Design Director*
Allegra Thoresen, *Director of Communications*
Tamara Vallejos, *Director of Marketing*

Office of the Chief Operating Officer and Corporate Secretary

Lesley Rosenthal, *Chief Operating Officer and Corporate Secretary*
Paul Sutter, *Associate Vice President, Facilities*
Frank Duda, *Director, Facilities Operations*
Emily Torneu, *Director, Capital Projects*
Thom Widmann, *Senior Director of Production*
Elizabeth Svokos, *Director of Media Production and Executive Producer*
Christian Keck, *Chief Technology Officer*
Edwin Melendez, *Deputy Chief Technology Officer*
Jeremy Pinquist, *Director of Enterprise Applications*
Jessica Rothbart, *Director of Human Resources*
Christina Wenger, *Associate Director, Public Performance Operations*
Jennifer Wilcox, *Director of Apprenticeship Program*
Mark Shelton, *Chief of Public Safety*
Richard Mannoia, *Senior Director of Education and Strategy, K-12 Programs and Initiatives*

Legal

Jane Sovern, *Interim Legal Counsel*
Jason Kane-Seitz, *Director, Office of Non-Discrimination and Title IX*

Finance

Cathy Nadeau, *Vice President and Chief Financial Officer*
Michael Kerstan, *Controller*
Christophe Jorand, *Associate Vice President, Financial Planning and Analysis, Reporting and Business Intelligence*
Michele Billings, *Associate Vice President of Finance Operations*
Nick Mazurco, *Associate Vice President, Bursar and Student Accounts*
Tina Gonzalez, *Assistant Dean for Financial Aid*
Michael Dymond, *Director of Financial Planning and Analysis*

Juilliard for All

Attend or stream a performance

Enroll in an Extension class

Shop online at our store

Hire our performers

Support Juilliard

juilliard.edu/ForAll

