

# Indecent

by Paula Vogel

Fourth-Year Drama Production  
2021–22 Season

Juilliard



## A Message From Evan Yionoulis

Welcome to Juilliard Drama Division's production of *Indecent*, directed by Maggie Burrows. We are thrilled to bring our fourth-year fall season to a close with Paula Vogel's haunting play with music about a Yiddish theater troupe's journey across Europe to New York City and back again as it performs Sholem Asch's controversial play *The God of Vengeance*.

After more than a year with remote audiences, we are grateful to have you back in person with us, sharing the journey of our graduating actors as they prepare to enter the profession.

It has been a pleasure to work once again with the dedicated Juilliard production staff and to collaborate with this professional creative team and our colleagues in the Music Division in bringing to life this exciting production.

Wishing all of us a healthy and safe winter,

*Evan*

**Evan Yionoulis**

*Richard Rodgers Dean and Director of the Drama Division*

---

# The Juilliard School

presents

A Fourth-Year (Group 51) Performance Project

## Indecent

By Paula Vogel

Original Broadway Production Conceived and Directed by Rebecca Taichman

Score and Original Music by Lisa Gutkin and Aaron Halva

Directed by Maggie Burrows

Choreography by William Carlos Angulo

Music Direction by Lisa Gutkin

Stephanie P. McClelland Drama Theater

Scenic Design: Kristen Robinson

Costume Design: Alicia J. Austin

Lighting Design: Mextly Couzin

Sound Design: Fabian Obispo

Projection Design: Katerina Vitaly

Production Stage Manager: Christine Joanne Colonna

Original Broadway Production produced by  
Daryl Roth, Elizabeth I. McCann, and Cody Lassen

*Indecent* was produced by the Vineyard Theatre  
(Douglas Aibel and Sarah Stern, Artistic Directors; Jennifer Garvey-Blackwell, Executive Director)  
New York City, Spring 2016

*Indecent* was commissioned by  
Yale Repertory Theatre, New Haven, Connecticut  
(James Bundy, Artistic Director; Victoria Nolan, Managing Director)  
and  
Oregon Shakespeare Festival, Ashland, Oregon  
(Bill Rauch, Artistic Director, Paul Nicholson, Executive Director)

Originally produced by  
Yale Repertory Theatre, New Haven, Connecticut  
(James Bundy, Artistic Director; Victoria Nolan, Managing Director)  
and  
La Jolla Playhouse, La Jolla, California  
(Christopher Ashley, Artistic Director; Michael S. Rosenberg, Managing Director)

*Indecent* under the then title of "The Vengeance Project" was developed, in part,  
at the 2013 Sundance Institute Theatre Lab at the Sundance Resort

Inspired by *The People vs. The God of Vengeance*,  
Conceived by Rebecca Rugg and Rebecca Taichman

*Indecent* is presented by special arrangement with Dramatists Play Service, Inc., New York.

---

## Cast

Lemml	Anders Keith
Chana	Lennox T. Duong
Avram	Aaron Gonner
Halina	Marianna Cydni Gailus
Mendel	Sasha-Raphael Prissert
Vera	Arianna Gayle Stucki
Otto	Orlando Rivera
Ortwin/Guitar	Luca Fontaine
Moriz Godowsky/Accordion	Ira Khonen Temple*
Mayer Balsam/Clarinet	Roi Karni †
Nelson Friedman/Violin	Oliver Neubauer †
Henryk Offenbach/Mandolin/Cello	Raphael Boden †

\* *Guest Artist*      † *Student in the Music Division*

*Indecent* will be performed without an intermission.

## Production Team for *Indecent*

<b>Fight/Intimacy Director</b> Alicia Rodis	<b>Associate Music Director</b> Ira Khonen Temple	<b>Assistant Lighting Designer</b> Katy Atwell	<b>Fight/Intimacy Captain</b> Arianna Gayle Stucki
<b>Voice/Dialect Coach</b> Dwight Bacquie	<b>Yiddish Consultant</b> Moishe Rosenfeld	<b>Assistant Sound Designer</b> Liam Bellman-Sharpe	<b>Stage Supervisor</b> Byron Hunt
<b>Alexander Technique Coach</b> Carolyn Serota	<b>Assistant Director</b> Ka-Ling Cheung	<b>Assistant Stage Managers</b> Olivia Fletcher‡ Josh-Andrew Wisdom‡	<b>Production Manager</b> David Strobbe
<b>Dramaturg</b> Shana Komitee	<b>Assistant Costume Designer</b> Jacky Sanger‡	<b>Dance Captain</b> Aaron Gonner	<b>Production Activities Manager, Drama</b> James Gregg
			<b>Director, Professional Apprentice Program</b> Jennifer Linn Wilcox

‡ *Member, Professional Apprentice Program*

Special thanks to our colleagues in the Music Division

## Music Credits

### "Oklahoma"

Music by Richard Rodgers, lyrics by Oscar Hammerstein II

This selection is used by special arrangement with the Rodgers & Hammerstein Organization, a Concord Music Company, [www.rnh.com](http://www.rnh.com). All Rights Reserved.

"Wiegala" by Ilse Weber

© Copyright 2002 by Boosey & Hawkes Bote & Bock GMBH, Berlin

All rights administered by Iimage Music Inc., [www.image-music.com](http://www.image-music.com). All Rights Reserved.

"Bei Mir Bist Du Schon"

Words by Sammy Cahn, Saul Chaplin, and Jacob Jacobs; music by Sholom Secunda

Copyright © 1937 Cahn Music Co. (ASCAP)

This selection is used by special arrangement with Concord Music Company on behalf of Cahn Music Company, [www.image-music.com](http://www.image-music.com). All Rights Reserved.

"Ich hab noch einen Koffer in Berlin" (Theme from "I Am a Camera")

German Text by Aldo Von Pinelli, music by Erich M. Siegel

TRO—© Copyright 1955 (renewed) Hampshire House Publishing Corp., New York, New York

All Rights Reserved Including Public Performance For Profit; Used by Permission

# 2021-22 Drama Division Faculty, Staff, and Guest Artists

---

**Evan Yionoulis**, Richard Rodgers Dean and Director

**Derrick Sanders**, Associate Director

**Tanya Barfield** and **David Lindsay-Abaire**, Co-Directors,

Lila Acheson Wallace American Playwrights Program

**Katherine Hood**, Managing Director

**Lindsey Alexander**, Director of Artistic and Curricular Planning

**Dwight Bacquie**, Speech

**Elana Bell**, Poetry

**Jessica Blank**, Story

**Tarek Bouraque**, Film History and Grammar

**Joshua Brody**, Guest Director

**Mark Brokaw**, Guest Director

**Maggie Burrows**, Guest Director

**Ka-Ling Cheung**, Teaching Fellow

**Sarah Cimino**, Makeup Techniques

**Jimonn Cole**, Guest Director

**Christine Joanne Colonna**, Stage Management

**Carson Crow**, Administrative Assistant

**Michelle DiBucci**, Music Studies

**taneisha duggan**, Guest Director

**Kareem Fahmy**, Guest Director

**Richard Feldman**, Improvisation/Scene Study

**David Gaines**, Musical Vocal Coach

**Jackson Gay**, Guest Director

**Morgan Grambo**, Artistic Programs Assistant

**James Gregg**, Production Activities Manager

**Deborah Hecht**, Voice and Speech

**Jasminn Johnson**, Teaching Fellow

**Claire Karpen**, Actor Presentations

**Kati Koerner**, Pedagogy

**Shana Komitee**, Vibrant Legacies in Theater

**Bob Krakower**, Acting on Camera

**Deborah R. Lapidus**, Singing

**Ellen Lauren**, Suzuki Method

**Maya Lopez**, Administrative Apprentice

**Jenny Lord**, Methodologies of Directing/  
Playwrights Program Associate

**Beth McGuire**, Voice and Dialects

**Kathleen McNenny**, Masks

**Kym Moore**, Guest Teaching Artist

**Melissa Mowry**, Guest Director

**Charlotte Okie**, Alexander Technique

**Mark Olsen**, Movement

**Orlando Pabotoy**, Physical Comedy

**Michael Perlman**, Guest Director

**Marci Phillips**, Professional Seminar

**Darryl Quinton**, Movement

**Michael Rudko**, Guest Teaching Artist

**Dawn Akemi Saito**, Movement/Director

**Carolyn Serota**, Alexander Technique

**Jerry Shafnisky**, Operations Manager

**Cristina Sison**, Stage Management

**Kaitlin Springston**, Schedule Coordinator

**Nilaja Sun**, Guest Teaching Artist

**Adam Szymkowicz**, Playwrights  
Program Manager

**Andrew Wade**, Voice

**Beth Whitaker**, American Theater Landscape/  
Elements of Producing

**Kate Wilson**, Voice

**Stephanie Ybarra**, Elements of Producing

Plays produced this season allow fourth-year actors to explore vital stories that speak to the concerns of the times, to apply all aspects of their training to the creation of character, and, finally, to share the work with you, the audience.

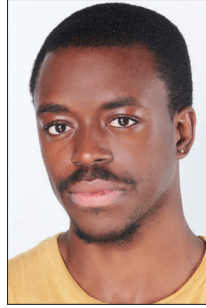
This production uses the Artist Engagement Services of the University Resident Theatre Association.

Juilliard is committed to the diversity of our community and to fostering an environment that is inclusive, supportive, and welcoming to all. For information on our equity, diversity, inclusion, and belonging efforts, and to see Juilliard's land acknowledgement statement, please visit our website at [juilliard.edu](http://juilliard.edu).

# Group 51

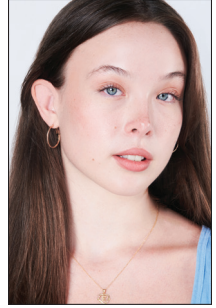
---

The Company of Actors  
in their fourth year of  
training in the Juilliard  
Drama Division



Oluwatobiloba  
Adeyemo

Prince George's County,  
Maryland



Ella Beatty

Los Angeles, California



Luca Fontaine

Le Chesnay, France



Marianna Cydni Gailus

Manhattan, New York



Aaron Gonner

Dubuque, Iowa



Britnie Narcisse

Brooklyn, New York



Alexia Pores

Boca Raton, Florida



Sasha-Raphael Prissert

Palm Beach, Florida



Orlando Rivera

Bronx, New York



Lennox T. Duong  
Fresno, California



Jesse Frances Epstein  
Lafayette, California



Visit Group 51's  
fourth-year website.



Frank Iriele  
Houston, Texas



Miles Jacoby  
Wellesley, Massachusetts



Anders Keith  
South Pasadena, California



Blake Russell  
Cape Girardeau, Missouri



Gabriela Saker  
San Juan, Puerto Rico



Morgan Scott  
Greenville, South Carolina



Arianna Gayle Stucki  
Ogden, Utah

## The John Houseman Prize

---



20th Century Fox Film

Established by Joan Houseman in spring 1994 to honor the memory of the Juilliard Drama Division's founding director, the John Houseman Prize, in the form of a living-expense stipend, is awarded annually to an acting student at the end of the third year of training who has demonstrated exceptional ability in classical theater. For the 2021-22 academic year, the Drama Division faculty has selected two prizewinners: **Lennox T. Duong** and **Luca Fontaine**.



# Juilliard Production Department

---

**Thom Widmann**, Senior Director of Production  
**Jean Berek**, Business and Operations Manager  
**David Strobbe**, Production Manager  
**Laura Lindsay**, Production Manager  
**Ian Paul Guzzone**, Production Manager  
**Edda Baruch**, Production Office Associate Administrator  
**Kristin Herrick**, Production Administrative Coordinator

## Costume Shop Supervisor

Luke Simcock

## Assistant Costume Shop Supervisor

Nicola Gardiner

## Costume Shop Office and Business Manager

Edda Baruch

## Wardrobe Supervisor

Márió Talán de la Rosa

## Assistant Wardrobe Supervisor

Amelia Dent

## Design Coordinator

Audrey Nauman

## Drapers

Barbara Brust

Kimberly Buetzow

Tomoko Naka

## First Hands

Naoko Arcari

Phoebe Miller

Kyle Pearson

## Crafts Artisan

Victoria Bek

## Costume Shop Staff

Jess Beyer\*

Maddie Kevelson\*

Jacky Sanger\*

Caroline Tyson\*

## Wardrobe Run Crew

Clara Gumbart

Amanda McDowall

## Wigs and Makeup Shop Supervisor

Sarah Cimino

## Wigs and Makeup Shop Associate Supervisor

Nathaniel Hathaway

## Wigs and Makeup Shop Staff

Jordynn Hill\*

Sarah Plata\*

## Wigs and Makeup Run Crew

Tessa Pilon

Sarah Plata\*

Jordynn Smith\*

## Electrics Shop Supervisor

Joel Turnham

## Assistant Electrics Shop Supervisor

Lauren Miller

## Master Electrician, Peter Jay Sharp Theater

Patrick Dugan

## Master Electrician, Willson Theater

Carly Shiner

## Master Electrician, Stephanie P. McClelland Drama Theater

Tercio Bretas

## Studio Lighting Supervisor and Staff Electrician

Eleanor Smith

## Assistant Master Electrician and Light Board Operator

Jessie Hamilton\*

## Light Board Programmer

Kenzie Carpenter

## Electricians

Jack Bebinger

Seth Brown\*

Kenzie Carpenter

Danielle Eley

Sarah Green

Jessie Hamilton\*

Matt Holcombe

Catherine Kennedy\*

C. Lee

Kat Meister

Abigail Rinaldi

Daniel Santamaria

Conor Thiele

## Sound Supervisor

Marc Waithe

## Lead Audio Engineer

Christopher Schardin

## Properties Shop Supervisor

Kate Dale

## Assistant Properties Shop Supervisor

Josh Hackett

## Stock Manager/Artisan

Jessica Nelson

## Properties Carpenter/Artisan

Mackenzie Cunningham

## Properties Artisans

Jessie Blackman

Laura Carty\*

Stephanie Gonzalez

Sara Pool

Belle Smith\*

## Technical Director

Justin Elie

## Associate Technical Director

Alexandra McNamara

## Stage Supervisor

Byron Hunt

## Associate Stage Supervisor

Jessica Sloan Hunter

## Assistant Stage Supervisor

Colly Carver

## Scene Shop Manager

Josh Sturman

## Lead Carpenters

Maxim Noonan-Pomada

Alexander Setzko

## Carpenters

Cody Henson

Pete Marzilli

Jill Salisbury

## Technical Direction Apprentice

Elias Solis\*

## Scenic Run Crew

Emily Brown

## Scenic Charge Artist

Jenny Stanjeski

## Assistant Scenic Charge Artist

David Blaakman

## Scenic Artists

Niazayre Bates\*

Michael Hayes\*

MAKE-UP PROVIDED BY

**M·A·C**

\* Member, Professional  
Apprentice Program

# Juilliard Board of Trustees and Administration

## BOARD OF TRUSTEES

Bruce Kovner, *Chair*  
J. Christopher Kojima, *Vice Chair*

Joshua Black	Greg Margolies
Rondi Charlestone	Stephanie Palmer McClelland
Julie Anne Choi	Christina McInerney
Kent A. Clark	Lester S. Morse Jr.
Barbara G. Fleischman	Rebecca Morse
Mary Graham	Stephen A. Novick
Joan W. Harris	Susan W. Rose
Matt Jacobson	Jeffrey Seller
Edward E. Johnson Jr.	Deborah Simon
Philippe Khuong-Huu	Sarah Billinghurst Solomon
Karen M. Levy	William E. "Wes" Stricker, MD
Teresa E. Lindsay	Yael Taqqu
Laura Linney	Reginald Van Lee
Vincent A. Mai	Damian Woetzel
Ellen Marcus	Camille Zamora

## TRUSTEES EMERITI

June Noble Larkin, <i>Chair Emerita</i> (in memoriam)	Sidney R. Knafel
Mary Elin Barrett	Nancy A. Marks
Kenneth S. Davidson	Elizabeth McCormack, (in memoriam)
Keith R. Gollust	Katheryn C. Patterson

Joseph W. Polisi, *President Emeritus*

## JUILLIARD COUNCIL

Michelle Demus Auerbach, *Co-Chair*  
Mitchell Nelson, *Co-Chair*

Barbara Brandt	John G. Popp
Eric J. Friedman	Grace E. Richardson
Peter L. Kend	Mary K. Riew
Sophie Laffont	Jeremy T. Smith
Jean-Hughes Monier	Alexander I. Tachmes
Terry Morgenthaler	

## EXECUTIVE OFFICERS AND SENIOR ADMINISTRATION

Damian Woetzel, *President*

### Office of the President

Ciaran Escoffery, *Chief of Staff*  
Ara Guzeliman, *Special Advisor*  
Kathryn Kozlark, *Artistic Producer and Director for Creative Enterprise*  
Christina Salgado, *Director for Equity, Diversity, Inclusion, and Belonging Initiatives*

### Office of the Provost

Adam Meyer, *Provost*  
Kirstin Ek, *Associate Provost*  
José García-León, *Dean of Academic Affairs and Assessment*  
Amy Evans, *Assistant Dean for Academic Affairs*  
John-Morgan Bush, *Director of Lifelong Learning*

### Dance Division

Alicia Graf Mack, *Dean and Director of the Dance Division*  
Katie Friis, *Administrative Director*  
Mario Alberto Zambrano, *Associate Director*

### Drama Division

Evan Yionoulis, *Richard Rodgers Dean and Director of the Drama Division*  
Derrick Sanders, *Associate Director*  
Katherine Hood, *Managing Director*  
Lindsay Alexander, *Director of Artistic and Curricular Planning*

### Music Division

David Ludwig, *Dean and Director of the Music Division*  
Bärlü Nugent, *Assistant Dean, Director of Chamber Music*  
A. Joseph Soucy, *Assistant Dean for Orchestral Studies*  
Mario Igrac, *Chief Piano Technician*  
Joanna K. Trebelhorn, *Director of Orchestral and Ensemble Operations*

### Historical Performance

Robert Mealy, *Director of Historical Performance*  
Karin Brookes, *Administrative Director*

### Jazz

Wynton Marsalis, *Director of Juilliard Jazz*  
Aaron Flagg, *Chair and Associate Director*

## Ellen and James S. Marcus Institute for Vocal Arts

Brian Zeger, *Artistic Director of the Ellen and James S. Marcus Institute for Vocal Arts*  
Emily Wells, *Director of Administration*  
Andrew Gaines, *Director of Opera Activities*

## Lila Acheson Wallace Library and Doctoral Fellows Program

Jane Gottlieb, *Vice President for Library and Information Resources;*  
*Director of the C. V. Starr Doctoral Fellows Program*  
Jeni Dahmus Farah, *Director, Archives*  
Alan Klein, *Director of Library Technical Services*

## Preparatory Division

Weston Sprott, *Dean of the Preparatory Division*  
Anthony McGill, *Artistic Director, Music Advancement Program*  
Rebecca Reuter, *Administrative Director, Music Advancement Program*  
Ekaterina Lawson, *Director of Admissions and Academic Affairs, Pre-College*  
Anna Roizman, *Director of Performance Activities, Pre-College*

## Enrollment Management and Student Development

Joan D. Warren, *Vice President of Enrollment Management and Student Development*  
Barrett Hipes, *Dean of Student Development*  
Kathleen Tesar, *Associate Dean for Enrollment Management*  
Alice Jones, *Assistant Dean of Community Engagement and Career Services*  
Sabrina Tanbara, *Assistant Dean of Student Affairs*  
Vanessa Valenzuela, *Assistant Dean, International Advisement and Student Diversity Initiatives*  
William Buse, *Director of Counseling Services*  
Rachel Christensen, *Administrative Director, Alan D. Marks Center for Career Services and Entrepreneurship*  
Katherine Gertson, *Registrar*  
Tina Gonzalez, *Director of Financial Aid*  
Camille Pajor, *Director of Bias Response and Title IX Coordinator*  
Todd Porter, *Assistant Dean, Residence Life*  
Howard Rosenberg MD, *Medical Director*  
Dan Stokes, *Director of Academic Support and Disability Services*  
Beth Tchow, *Administrative Director of Health and Counseling Services*

## Development

Alexandra Wheeler, *Vice President and Chief Advancement Officer*  
Katie Murtha, *Director of Major Gifts*  
Lori Padua, *Director of Planned Giving*  
Rebecca Vaccarelli, *Director of Alumni Relations*  
Kim Furano, *Director of Institutional Relations*  
Robyn Calmann, *Director of Special Events*  
Toniya Katsarov, *Director of Development Operations*

## Public Affairs

Rosalie Contreras, *Vice President of Public Affairs*  
Susan Jackson, *Editorial Director*  
Anna Sayer, *Design Director*  
Tamara Vallejos, *Director of Marketing*  
Mara Viatkovic, *Director of Marketing, Community Relations*

## Office of the Chief Operating Officer and Corporate Secretary

Lesley Rosenthal, *Chief Operating Officer and Corporate Secretary*  
Mark Shelton, *Chief of Public Safety*  
Adam Gagan, *Director of Security*  
Cameron Christensen, *Associate Vice President, Facilities*  
Richard Mannoia, *Senior Director of Education and Strategy, K-12 Programs and Initiatives*  
Thom Widmann, *Senior Director of Production*  
Tina Matin, *Director of Earned Revenue Operations*  
Kevin Boutote, *Director of Recording and Classroom Technology*

## Finance

Cathy Nadeau, *Vice President and Chief Financial Officer*  
Michael Kerstan, *Controller*  
Irina Shteyn, *Director of Financial Planning and Analysis*  
Nicholas Mazurco, *Director of Student Accounts/Bursar*

## Administration and Law

Maurice F. Edelson, *Vice President for Administration and General Counsel*  
Carl Young, *Chief Information Officer*  
Dmitriy Aminov, *Director of IT Engineering*  
Clara Perdz, *Director of Client Services, IT*  
Jeremy Pinquist, *Director of Enterprise Applications*  
Katie Germana, *Director of Human Resources*  
Jennifer Wilcox, *Director of Apprentice Program*



Photo by Claudio Papapietro

# Support Scholarships

The Juilliard Scholarship Fund provides vital support to any student with need and helps make a Juilliard education possible for many deserving young actors, dancers, and musicians. **With 90 percent of our students eligible for financial assistance**, every scholarship gift represents important progress toward Juilliard's goal of securing the resources required to meet the needs of our dedicated artists. Gifts in any amount are gratefully welcomed!

Visit [juilliard.edu/support](https://juilliard.edu/support) or contact Irene Elias at [ielias@juilliard.edu](mailto:ielias@juilliard.edu) or (212) 799-5000, ext. 309, to learn more.

Attend or stream a performance  
Enroll in an Extension class  
Shop online at our store  
Hire our performers  
Support Juilliard

[juilliard.edu](https://juilliard.edu)