

Saturday Evening, December 14, 2024, at 7:30

The Juilliard School

presents

Juilliard Orchestra
Gemma New, *Conductor*
Hankyoung Linda Chang, *Violin*
Musica Sacra
Kent Tritle, *Music Director*

SALINA FISHER (b. 1993) ***Kintsugi*** (2022)

WILLIAM WALTON (1902-83) **Violin Concerto** (1939)

Andante tranquillo

Presto capriccioso alla napolitana

Vivace

HANKYOUNG LINDA CHANG, *Violin*

Intermission

GUSTAV HOLST (1874-1934) ***The Planets*** (1916)

Mars, the Bringer of War

Venus, the Bringer of Peace

Mercury, the Winged Messenger

Jupiter, the Bringer of Jollity

Saturn, the Bringer of Old Age

Uranus, the Magician

Neptune, the Mystic

MUSICA SACRA

Performance time: approximately two hours, including an intermission

**Bloomberg
Philanthropies** Lead Digital Sponsor

Juilliard is committed to the diversity of our community and to fostering an environment that is inclusive, supportive, and welcoming to all. For information on our equity, diversity, inclusion, and belonging efforts, please visit our website at juilliard.edu/edib.

Alice Tully Hall

*Please make certain that all electronic devices
are turned off during the performance.*

About the Program

By Georgeanne Banker

Kintsugi

SALINA FISHER

Born: October 6, 1993, in Christchurch, New Zealand

In mid 16th-century Japan, Zen Buddhist monk Sen-no-Rikyū cultivated a tea room that was “the quintessence of a space of peaceful meditation against the turbulence of the age,” ceramicist and scholar Kumiko Jacolin writes. The tenor of Rikyū’s tea ceremony took cues from Zen philosophies including *wabi-sabi*—seeing beauty in the imperfect and incomplete—and assumed the spirit of *ichigo-ichie*, or treasuring each encounter, says Jacolin, a tenet that for the tea master was “symbolized by the time shared between the host and guests of the tea room.” Over time, the hand-built tea bowls would naturally chip or crack, yet in Rikyū’s room, broken items were treasured rather than discarded: The wear was simply a part of a story, intrinsic to each vessel’s essence. Repairs were carefully realized according to a 15th-century technique and “mended by lacquer with gold decoration as ‘*kintsugi*’ (金継ぎ),” Jacolin writes. Literally meaning “gold joining,” *kintsugi* emerged as a contemplative art and process that not only embodied the beauty of imperfection but made the shattered whole: transfigured, radiant, and resilient.

“*Kintsugi* is such a striking visual representation of a metaphor that we can all relate to in our own way—the idea of celebrating ‘cracks’ or flaws as beautiful parts of ourselves, and finding ways to heal,” composer Salina Fisher said in a recent interview with Pacific Northwest Ballet. “This concept felt particularly relevant in 2020 when I wrote

my piano trio *Kintsugi*.” Commissioned by New Zealand’s NZTrio, the work was expanded by the composer for Auckland’s Manukau Symphony Orchestra, in 2022. While composing this piece, Fisher met Jacolin to learn more about this beautiful ceramic process: “Rather than hiding the damage, *kintsugi* celebrates all the cracks or ‘scars’ for the unique history that they represent. The object is more beautiful for having been broken,” Fisher notes. “I am personally drawn to *kintsugi* as a metaphor for embracing ‘brokenness’ and imperfection as a source of strength. This piece is my expression and exploration of *kintsugi*, and involves musical fragmentation, fragility, mending, and finding beauty in the ‘cracks’.”

The youngest composer to win New Zealand’s SOUNZ Contemporary Award, Fisher studied both composition and violin at the New Zealand School of Music—Te Kōkī before receiving a Fulbright scholarship to study at the Manhattan School of Music. Her powerful creative work includes koto improvisations and collaborations with players of taonga pūoro, or traditional Māori instruments, and ranges to prismatic, full-scale compositions for symphony orchestra. A sonic meditation on its title practice, *Kintsugi* opens with glistening harmonics from the violins that blend seamlessly with reflective lines from the flute, while soft, percussive pinpoints of light are observed by the harp and vibraphone. Fisher holds neutral space for both dissonance and consonance: Seconds, tritones, sevenths, and ninths coexist with their ostensibly perfect analogs, while intervallic gaps are filled with golden chords, clusters, colors, and textures. Here in our shared concert hall, *Kintsugi* manifests *ichigo-ichie*, encouraging each artist, listener, host, and guest to treasure this beautiful, singular encounter.

Violin Concerto **WILLIAM WALTON**

Born: March 29, 1902, in Oldham, Lancashire, U.K.

Died: March 8, 1983, in Ischia, Italy

With the world on the brink of another war, superstar violinist Jascha Heifetz made it a point to commission and perform new music. In 1936, Heifetz sought a “young man by the name of Walton,” a reputed darling of English modernism, from whom he would commission a new concerto. A decade earlier, William Walton had made a name for himself as a divisive son of the avant-garde and, in 1932, his *Viola Concerto*, premiered that year by Paul Hindemith, not only showcased the oft-ignored soloistic prowess of the instrument but thrilled audiences with its lyrical angularity and evocative orchestration. And so Heifetz and Walton talked nuts and bolts over lunch at London’s Berkeley Hotel, and by spring 1938, the composer had gotten to work.

Walton completed the concerto in 1939 after visiting Heifetz at his home in Connecticut, where the violinist added finishing touches, and, according to Walton, “jazzed it up.” The concerto was slated to premiere in December of that year, but the burgeoning war in Europe prevented the composer from attending. Travel was difficult, and Walton was otherwise engaged: “For the first time I will not be present at a world premiere of my own work. I have been called to service, and am now driving an ambulance,” he wrote to Heifetz. “You have my blessings, and permission to make any necessary changes at your first orchestral rehearsal.” While Walton was also busy composing for the British Army Film and Photographic Unit, the pair continued to mail each other minor alterations to the concerto, which, Walton hoped, “a well-meaning, if unmusical censor

won’t obliterate under the misapprehension that it is a code!” The music was indeed delivered, and Heifetz gave the premiere on schedule with the Cleveland Orchestra under the baton of Artur Rodziński.

Walton wrote the bulk of the concerto during a stay on the Amalfi Coast, where he traveled with his longtime partner, Alice, Viscountess Wimborne, to recover from a surgical procedure in late 1937. It was there he composed his *Viola Concerto* nearly a decade earlier, and as an unfathomable darkness stirred across Europe, Walton again found inspiration amid the crystalline turquoise of the Tyrrhenian Sea. Set in a contemplative B Minor—just like the concerto Edward Elgar wrote for Fritz Kreisler some 30 years earlier—the violin’s very first notes (a piano, F-sharp octave) are to be played *sognando*, or dreamily, foreshadowing the movement’s rhapsodic lyricism. The *Andante tranquillo* casts the soloist as a capricious romantic, floating upwards through the weightless tessitura, trailed by reeds and flutes, zigzagging across the strings, and reminded of heavy realities by the full orchestra.

The central *Presto capriccioso alla napoletana* betrays Campania’s Janus-faced fauna: The movement was inspired by a tarantula bite Walton incurred during his stay there. He commemorated the encounter by infusing the *Presto* with the creature’s namesake dance, a *tarantella*, that skitters along the periphery of the trio—a *canzonetta*—whose gossamer threads are spun in part by the harp, horn, and solo violin. The whole *Presto* affair is “quite gaga, I may say,” Walton wrote, “and of doubtful propriety after the first movement.” The concerto, said to be inspired by his affection for Alice, ends with its heart on its sleeve: The *Vivace*, not bereft of virtuosic soliloquies and orchestral theatrics, leads the work to a stirring finish.

The Planets **GUSTAV HOLST**

Born: September 21, 1874, in Cheltenham, U.K.

Died: May 25, 1934, in London

Gazing upward, the ancients mapped their philosophies of sound on the stars, the colossal, celestial spheres gliding above us, whose heavenly motion produced a music so great and so ubiquitous—a *musica universalis*—that some argued we mortals could not even hear it. From infinite flecks of starlight emerged the 12 signs of the zodiac, and from the octave's infinite sounds came 12 semitones, and Nicomachus, Ptolemy, Boethius, and others mused on their material and metaphysical connections. Just as our spirits are guided by the spheres, they said, on earth our souls are likewise moved by an earthly music, a *musica instrumentalis*, with consonances and dissonances and highs and lows that move in tandem with the stars.

It was amid the deepest lows of his career when Gustav Holst gazed upward and mapped his own philosophies of the stars onto sound, creating a spectacular example of audible music: *The Planets*. By the time he got to plotting his symphonic chart, Holst was serving as the head of music at St. Paul's School for Girls in London, some 100 miles from his hometown of Cheltenham. Though Holst was by all accounts a skilled educator, his teaching job—much like his work as an orchestral trombonist before it—served to support his composing habit. Having studied composition (and trombone) at the Royal College of Music, Holst was always enamored of the orchestra's sonic enormity and how Wagner, Stravinsky, Schoenberg, and his own friend Vaughan Williams, among others, sorted its gallimaufry of voices into mighty constellations of music.

However, with few exceptions, Holst's early efforts as a composer were largely per-

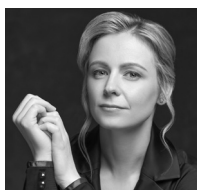
ceived as mid (to use a TikTok term). In 1914, the year Holst turned 40, he confided to his friend, writer Clifford Bax, that he felt like a failure as a composer and that a career in composition—his one true love—was perhaps not in the cards after all. In the throes of this mercurial love affair, Holst, like any Gen Z or Millennial might, turned to astrology for guidance. Taking cues from Alan Leo's planet-by-planet astrological treatise *The Art of Synthesis*, that same year, in a quiet corner of his school, Holst began sketching what was to be his loudest and most monumental opus. Since he was suffering from neuritis in his right arm, *The Planets* was set to the page largely in part by Holst's colleagues, pianists Vally Lasker and Nora Day. After the work's completion, the pair brought its two-piano version on tour, popularizing it with conductors across Europe.

The Planets is scored for a titanic complement of instruments, including contrabassoon, bass oboe, six horns, and six timpani—not to mention the “hidden choir of female voices,” two harps, celeste, and an organ for good measure. Holst's more-is-more approach to orchestration allows for brilliant expansion and contraction of the orchestra throughout its seven movements, with the opening *Mars, the Bringer of War*, employing its full forces. Holst immediately sets a driving ostinato in motion with col legno strings as menacing tritone intervals sound in the low brass. The bellicose movement, set in 5/4 time, culminates with a monstrous, dissonant cluster from the orchestra and organ. With blaring dissonances suited to any Sith lord, Cs and Gs war against D-flats and A-flats as the movement comes to a cacophonous, quadruple forte end. Holst pares down his orchestral army with *Venus, the Bringer of Peace*, and instead concocts a sonic balm of upper winds, lush strings, and a solo horn, solo violin, and a single glockenspiel from the percussion.

The ephemeral *Mercury, the Winged Messenger* traces weightless motives that flit about the orchestra, and the brightly optimistic *Jupiter, the Bringer of Jollity* includes a central theme Holst would later repurpose as the British hymn "I Vow to Thee, My Country." *Saturn, the Bringer of Old Age* is a sage reminder that time catches up with us all. Marching inexorably forward, the movement reaches its zenith as tick-tocking major seconds are steeled by tolling tubular bells. Following *Uranus, the Magician*—perhaps a wink to Paul Dukas' 1897 *The Sorcerer's Apprentice*—Holst gazes into the unknown through the work's final movement, *Neptune, the Mystic*. As our terrene *musica instruemntalis* yields to its transcendental counterpart, the final bars of *The Planets*, sung only by the wordless choir, are to be repeated until "lost in the distance;" an ethereal, open-ended conclusion to our starry voyage through time and space.

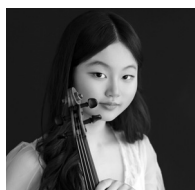
Georgianne Banker holds a Master of Music degree in Historical Performance from Juilliard.

Meet the Artists



Gemma New

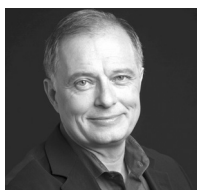
New Zealand-born Gemma New, artistic advisor and principal conductor of the New Zealand Symphony Orchestra, was appointed an Officer of the New Zealand Order of Merit this year. Highlights of New's 2024-25 season include her debut with the Münchner Rundfunkorchester, Swedish Radio Symphony Orchestra, National Arts Centre Orchestra in Ottawa, BBC National Orchestra and Chorus of Wales, Brussels Philharmonic, Netherlands Philharmonic Orchestra, Prague Philharmonia, and Musikkollegium Winterthur. In the U.S., she returns to lead the Milwaukee Symphony Orchestra, Indianapolis Symphony Orchestra, and St. Louis Symphony Orchestra. In her third season leading the New Zealand Symphony Orchestra, New conducts a string of fall performances in Wellington, Hastings, Auckland, and Christchurch, featuring Lyell Cresswell's Piano Concerto No. 3 and the New Zealand premiere of Kaija Saariaho's *Asteroid* in the program *The Planets: Elgar & Holst*, also spotlighting violinist Christian Tetzlaff in a performance of Elgar's Violin Concerto. Last season marked New's final as music director of the Hamilton Philharmonic Orchestra in Ontario. She previously served as principal guest conductor of the Dallas Symphony Orchestra, resident conductor of the St. Louis Symphony Orchestra, and associate conductor of the New Jersey Symphony. A former Dudamel Conducting Fellow with the Los Angeles Philharmonic and Conducting Fellow at Tanglewood Music Center, New was awarded Solti Foundation U.S. Career Assistance Awards in 2017, 2019, and 2020, before receiving the 2021 Sir Georg Solti Conducting Award.



Hankyoung Linda Chang

Born in South Korea, Hankyoung Linda Chang began studying the violin at age 4 with Aleksandr Konyakhin, followed by studies with Min-Jeong Suh at the Music Academy for Young Gifted Musicians at the Seoul Arts Center. At age 8, Chang began studying at Juilliard Pre-College with Hyo Kang, and this year, at 16, she began her bachelor's studies here, studying with Hyo Kang and Adele Anthony. In 2022, she won the Juilliard Pre-College Violin Concerto Competition, performing the Sibelius concerto with Adam Glaser conducting the Pre-College Orchestra, and she also performed the Tchaikovsky concerto with the Gunsan Philharmonic in Korea. Chang gave her first U.S. solo recital at Juilliard and appeared as a special guest with Vadim Gluzman in Chicago. She has played with the Pazardjik Orchestra of Bulgaria as well as with the Oltenia Philharmonic and Banatul Timisoara orchestras of Romania. She gave a solo recital in Korea as part of the 2023 Hic et Nunc Young Virtuoso Series, and at the Hic et Nunc! International Music Festivals in 2019 and 2021, she participated in master classes with Vadim Repin, David Chan, and Clara-Jumi Kang. Chang also performed in a master class with Cheeyun Kim at Sejong Soloists in Seoul and participated in classes led by Gluzman and Kyoko Takezawa at Bein & Fushi in Chicago.

Nancy A. Marks Chamber Music Scholarship



Kent Tritle

Kent Tritle (BM '85, MM '88, organ; MM '88, choral conducting; faculty 1996-present) is one of America's leading choral conductors. In addition to being music director of Musica Sacra, he is director of cathedral music and organist at the Cathedral of St. John the Divine in New York City and music director of the Oratorio Society of New York. An organ virtuoso, Tritle is the organist of the New York Philharmonic. He founded the Sacred Music in a Sacred Space concert series at New York's Church of St. Ignatius Loyola, leading it from 1989 to 2011. From 1996 to 2004, he was music director of the Desoff Choirs. Tritle's discography features recordings on the Telarc, Naxos, AMDG, Epiphany, Gothic, VAI, and MSR Classics labels, including the Grammy-nominated 2018 world premiere performance of the Paul Moravec/Mark Campbell oratorio *Sanctuary Road*, with the Oratorio Society of New York.



Michael Sheetz

As assistant music director of Musica Sacra, Michael Sheetz regularly conducts, prepares, and accompanies in performance at Carnegie Hall, Lincoln Center, and the Cathedral of St. John the Divine. He is an assistant professor and director of choral and voice studies at Hunter College of the City University of New York, music director of the Greenwich Village Chamber Singers, music associate at the Church of St. Ignatius Loyola, and resident faculty at Classic Lyric Arts. Sheetz has performed at Carnegie Hall

and Alice Tully Hall and, at the piano, he has been featured in numerous live broadcasts on WQXR and Vermont Public Radio. He has taught at Vassar College and Juilliard and has played for many internationally renowned conductors. Sheetz earned his DMA at Manhattan School of Music.

Musica Sacra

Musica Sacra creates professional choral performances of the highest caliber through concerts, recordings, commissioning and performing new choral works, and collaborating with top-tier performing arts organizations. This season, the chorus performs with the Los Angeles Philharmonic and Gustavo Dudamel as well as the New York City Ballet for *A Midsummer Night's Dream*. Recent collaborations include joining the New York Philharmonic for performances of Bach's *St. Matthew Passion* and Mozart's *Requiem* with Jaap van Zweden as well as live-score performances of *Amadeus*, *Close Encounters of the Third Kind*, and *2001: A Space Odyssey*. Musica Sacra joined the New York City Ballet for performances of *Les Noces*, the Orchestra of St. Luke's for the requiems of Brahms and Mozart and *St. Matthew Passion* as well as the Royal Philharmonic Orchestra for Holst's *The Planets*. Musica Sacra's self-produced season includes performances of diverse a cappella repertoire at the Church of St. Ignatius Loyola and the Cathedral of St. John the Divine as well as works of Bach, Mozart, and Beethoven at Carnegie Hall with soprano Susanna Phillips and pianist Simone Dinnerstein. Founded by Richard Westenburg in 1964, Musica Sacra has recorded on the RCA, BMG, MSR Classics, and Deutsche Grammophon labels, including the first digitally recorded performance of Handel's *Messiah*, released in 1982 by RCA and reissued on High Performance, BMG's audiophile label. Recent releases include *Messages to Myself*, a disc of contemporary works including commissions by Daniel Brewbaker and Michael Gilbertson; and *Eternal Reflections*, music of Robert Paterson produced by Adam Abeshouse.

Musica Sacra

Kent Tritle, *Music Director*

Mark Hanke, *Executive Director*

Michael Sheetz, *Assistant Music Director*

Margery Daley, *Choral Conductor*

Sopranos

Amber Evans

Amy Goldin

Rebecca Hargrove

Adrienne Lotto

Brittany Palmer

Katherine Peck

Erinn Sensenig

Wendy Baker Zepeda

Altos

Melisa Bonetti

Jennifer Borghi

Donna Breitzer

Sishel Claverie

Catherine Hedberg

Elizabeth Picker

Suzanne Schwing

Chloe Zimmermann

The choral artists in this concert are represented by AGMA, the American Guild of Musical Artists AFL-CIO, the union that represents artists performing in opera, ballet, modern dance, and choral presentations as well as choreographers, stage directors, and stage managers.

Juilliard Orchestra

Juilliard's largest and most visible student performing ensemble, the Juilliard Orchestra is known for delivering polished and passionate performances of works spanning the repertoire. Comprising nearly 400 students in the bachelor's and master's degree programs, the orchestra appears throughout the season in concerts on the stages of Juilliard's Peter Jay Sharp Theater, Alice Tully Hall, and Carnegie Hall. The orchestra is a strong partner to Juilliard's other divisions, appearing in opera, dance, and drama productions as well as presenting an annual concert of world premieres by Juilliard student composers. This season, an impressive roster of world-renowned conductors leads the Juilliard Orchestra, including Matthew Aucoin, Daniela Candillari, Patrick Furrer, Giancarlo Guerrero, Ken Lam, Louis Langrée, Earl Lee, Gemma New, and Ruth Reinhardt as well as faculty conductors David Robertson, director of conducting studies and distinguished visiting faculty, and Jeffrey Milarsky. Among the virtual projects students from the orchestra participated in during the 2020 lockdown was *Bolero Juilliard*, which became a viral sensation. The Juilliard Orchestra has toured across the U.S. and throughout Europe, South America, and Asia, where it was the first Western conservatory ensemble allowed to visit and perform following the opening of the People's Republic of China in 1987, returning two decades later, in 2008. In summer 2019, the orchestra traveled to London, where they performed alongside the Royal Academy of Music in Royal Albert Hall at the BBC Proms. Other ensembles under the Juilliard Orchestra umbrella include the conductorless Juilliard Chamber Orchestra, Wind Orchestra, Lab Orchestra, and the contemporary music group AXIOM.

Juilliard Orchestra

Gemma New, *Conductor*

First Violin

Theo Bockhorst,
Concertmaster
Nini Giorgadze
Christopher Hummel
Jenny Jin
Yubin Kim
Jory Lane
Daisy Myungweon Lee
Yun Lee
Yun-Chung Lin
Cheng Io Lo
Daniel Rafimayeri
Henry Rogers
Hannah Song
Kevin Sung
Anna Wei
Juchao Zhao

Second Violin

Maya Kilburn,
Principal Second
Claire Arias-Kim
Seoho Bang
Eric Chen
Elli Choi
Eliza Hart
Eunha Kim
Julie Minn
Sophia Molina
Nami Nazar
Audrey Park
Roger Shao
Sophia Su
Yanguang Bruce Zhang

Viola

Stephen Adam Savage,
Principal
Amelia Krinke
Madeleine Pintoff
Max Turner
Audrey Wang
Shania Janae Watts
Gabriela Ybarra
Alexandra Yeoh
Ruoran Poppy Yu
Borong (Steven) Zhang
Jinglin Zhou
Pengxi Zhu

Cello

Eliana Razzino Yang,
Principal
Miles Goosby
Jackie Hager
Kuan Yu Huang
Angeline Kiang
Hsin Lin Alice Lee
Brandon Leonard
Elliot Lippy
Karim Maggio
Katina Pantazopoulos
David Sheng
Seah Katherine Yu

Double Bass

Wynter G. McCray, *Principal*
Anthony Barone
Lucas Caceres
Paul Gong
Thomas Green
ZiQi Li
Lauren Ugarte
Yue Zhang

Flute

Ellie Eunbi Baek, *Principal*³
Jeongwon Lee, *Principal*^{1,2}
Chris Boyadjiev
Joanne Lee
Kara Ravaschieri

Piccolo

Chris Boyadjiev³
Joanne Lee³
Kara Ravaschieri^{1,2}

Alto Flute

Chris Boyadjiev

Oboe

Jacks Pollard, *Principal*^{1,2}
Spencer Rubin, *Principal*³
William Simpfendorfer
Tai Yokomori

English Horn

William Simpfendorfer²
Peter Davies³

Bass Oboe

Jacks Pollard

Clarinet

Alice McDonald, *Principal*^{1,2}
Yvonne Wang, *Principal*³
Yejin Ahn
Chris Dechant
Jerry Han

Bass Clarinet

Joshua Choi

Bassoon

Alexis Cerise, *Principal*³
Christopher Jaewon Chung,
Principal^{1,2}
Nathan Shepherd
Zachary VonCannon

Contrabassoon

Nathan Shepherd

Horn

Brooks Wisniewski,
Principal^{1,2}
Sylvia Beach, *Principal*³
Cade Araza
Emily Jean Howell
Dongjun Kim
Michael Nunes
James Picarello

Trumpet

Bailey Cates, *Principal*¹
Megan Radcliffe, *Principal*²
Tianyu Wang, *Principal*³
Jade Park

Trombone

Theodore Swanson,
*Principal*³
Andrew Zaharis, *Principal*^{1,2}
Will Fowler
Kimberly Nelson

Bass Trombone

Mirza Alkhairid

Tenor Tuba

Sarah Goldberg

Tuba

Lau Yeung Wong

Timpani

Arnor Chu, *Principal*³
Doyeon DY Kim³
Heeyeon Kim²

Percussion

Arnor Chu,
Principal^{1,2}
Chaerim Park,
Principal³
Sean Edwards
Heeyeon Kim
Parker Meek
Ning Tie

Celeste

Hongbo Cai

Organ

Alex Leonardi

Harp

Annette Lee,
Principal³
Renée Murphy,
Principal^{1,2}
Krissy Teng

**Assistant
Conductor**

Valentina Paolucci

¹FISHER
²WALTON
³HOLST

Orchestra Administration

David Serkin Ludwig, *Dean and Director, Music Division*
A. Joseph Soucy, *Associate Dean, Orchestral Studies*
Joanna K. Trebelhorn, *Senior Director, Performance Operations and External Venue Relations, Music Division*
Lisa Dempsey Kane, *Principal Orchestra Librarian*
Adarsh Kumar, *Director, Orchestra Personnel*
Michael Dwinell, *Assistant Director, Artistic and Curricular Planning*
Ellen O'Neill, *Operations and Personnel Manager*
Alexa Weinberg, *Production Manager*
Daniel Pate, *Percussion Department Coordinator*
Elaine Li, *Assistant Orchestra Librarian*
Anne Qian Wang, *Assistant Orchestra Librarian*
Amy Hoang, *Orchestra Management Apprentice*

Juilliard

BOARD OF TRUSTEES

Vincent A. Mai, *Chair*
Julie Choi, *Vice Chair*
Laura Linney, *Vice Chair*

Jon Batiste
Joshua Black
J. Powell Brown
Jeffrey C. Campbell
Mary Schmidt Campbell
Rondi Charleston
Virginia Gambale
Jeffrey L. Gates
Joan W. Harris
Edward E. Johnson Jr.
Jerold Kayden
Philippe Khuong-Huu
J. Christopher Kojima
Teresa E. Lindsay
Ellen Marcus

Constance Marks
Stephanie Palmer McClelland
Christina McInerney
Anne Akiko Meyers
Lester S. Morse Jr.
Rebecca Morse
Tram Nguyen
Susan W. Rose
Jeffrey Seller
D. Ellen Shuman
Deborah Simon
Sarah Billingham Solomon
William E. "Wes" Stricker MD
Yael Taqqu
Laurie M. Tisch
Robert Weissenstein
Damian Woetzel
Camille Zamora

TRUSTEES EMERITI

Kenneth S. Davidson
Keith R. Gollust
Bruce Kovner, *Chair Emeritus*

Nancy A. Marks
Kathryn C. Patterson

Joseph W. Polisi, *President Emeritus*

EXECUTIVE OFFICERS AND SENIOR ADMINISTRATION

Damian Woetzel, *President*

Office of the President

Jazmin Morales, *Chief of Staff*
Kathryn Kozlark, *Artistic Producer and Director for Creative Enterprise*
Ria DasGupta, *Director, Equity, Diversity, Inclusion, and Belonging*
Nadia Sirota, *Creative Associate at Large*

Office of the Provost

Adam Meyer, *Provost*
Kirstin Ek, *Vice Provost for Academic Affairs*
Amy Evans, *Associate Provost for Academic Affairs and Assessment*
Katie Friis, *Associate Provost for Academic Affairs and Curriculum*
Katherine Gertson, *Assistant Dean and Registrar*
Kathleen Tesar, *Associate Dean for Enrollment Management*
Rachel Kunce, *Director of Music Admissions*
John-Morgan Bush, *Dean of Juilliard Extension*
Yassmeen Angarola, *Administrative Director*

Dance Division

Alicia Graf Mack, *Dean and Director of the Dance Division*
Alexandra Tweedley, *Administrative Director*
Mario Alberto Zambrano, *Associate Director*

Drama Division

Evan Yionoulis, *Richard Rodgers Dean and Director of the Drama Division*
Derrick Sanders, *Associate Director*
Katherine Hood, *Managing Director*
Lindsey Alexander, *Director of Artistic and Curricular Planning*

Music Division

David Serkin Ludwig, *Dean and Director of the Music Division*
A. Joseph Soucy, *Associate Dean of Orchestral Studies*
Merry Peckham, *Assistant Dean and Director of Chamber Music*
Fadwa Hayes, *Assistant Dean*
Joanna Trebellhorn, *Senior Director of Performance Operations and External Venue Relations*
Annabelle Avenier, *Associate Director of Artistic Programs*
Eric Oatts, *Administrative Director*
Mario Igrec, *Chief Piano Technician*
Ara Guzelimian, *Special Advisor*

Historical Performance

Robert Mealy, *Director of Historical Performance*
Karin Brookes, *Administrative Director*

Ellen and James S. Marcus Institute for Vocal Arts

Brian Zeger, *Artistic Director of the Ellen and James S. Marcus Institute for Vocal Arts*
Adam Nielsen, *Associate Artistic Director, Master of Music and Graduate Diploma Program*
Justina Lee, *Associate Artistic Director, Undergraduate Program*
Andrew Gaines, *Administrative Director*

Jazz

Wynton Marsalis, *Director of Juilliard Jazz*
Aaron Flegg, *Chair and Associate Director*

Preparatory Division

Weston Sprott, *Dean and Director of the Preparatory Division*
Anthony McGill, *Artistic Director, Music Advancement Program*
Yoheved Kaplinsky, *Artistic Advisor, Pre-College*
Rebecca Reuter, *Administrative Director, Music Advancement Program*
Ekaterina Lawson, *Director of Admissions and Academic Affairs, Pre-College*
Anna Royzman, *Director of Performance Activities, Pre-College*

Lila Acheson Wallace Library and Doctoral Fellows Program

Jane Gottlieb, *Vice President for Library and Information Resources; Director of the C.V. Starr Doctoral Fellows Program*
Jeni Dahmus Farah, *Director, Archives*
Alan Klein, *Director of Library Technical Services*

Student Development

Barrett Hipes, *Vice Provost and Dean of Student Development*
Sabrina Tanbara, *Associate Dean of Student Development*
Alice Jones, *Assistant Dean of Community Engagement and Career Services*
Vanessa Valenzuela, *Assistant Dean of International Advisement and Student Diversity Initiatives*
William Buse, *Director of Counseling Services*
Milo Campanella, *Director of Residence Life*
Nathan Fischer, *Director of Career Services*
Ian Prince, *Business Development Director, Career Services*
Adrian Rodriguez, *Director of Community Engagement*
Howard Rosenberg MD, *Medical Director*
Dan Stokes, *Director of Academic Support and Disability Services*
Beth Techow, *Administrative Director of Health and Counseling Services*

Development

Jonah Nigh, *Vice President and Chief Advancement Officer*
Michael Oliver, *Senior Director of Principal and Major Gifts*
Lori Padua, *Director of Planned Giving*
Rebecca Vaccarelli, *Director of Alumni Relations*
Kim Furano, *Director of Institutional Relations*
Robyn Calmann, *Director of Special Events*
Toniya Katsarov, *Director of Development Operations*

Communications and Marketing

Mary Caraccioli, *Vice President of Communications and Marketing*
Kaitlyn Zafonte, *Senior Director of Content Strategy*
Susan Jackson, *Editorial Director*
Jose Lechuga, *Website Director*
Anna Sayer, *Design Director*
Allegra Thoresen, *Director of Communications*
Tamara Vallejos, *Director of Marketing*

Office of the Chief Operating Officer and Corporate Secretary

Lesley Rosenthal, *Chief Operating Officer and Corporate Secretary*
Paul Sutter, *Associate Vice President, Facilities*
Frank Duda, *Director, Facilities Operations*
Emily Tomeu, *Director, Capital Projects*
Thom Widmann, *Senior Director of Production*
Elizabeth Svokos, *Director of Media Production and Executive Producer*
Christian Keck, *Chief Technology Officer*
Edwin Melendez, *Deputy Chief Technology Officer*
Jeremy Pinquist, *Director of Enterprise Applications*
Jessica Rothbart, *Director of Human Resources*
Christina Wenger, *Associate Director, Public Performance Operations*
Jennifer Wilcox, *Director of Apprentice Program*
Mark Shelton, *Chief of Public Safety*
Richard Mannioia, *Senior Director of Education and Strategy, K-12 Programs and Initiatives*

Legal

Jane Sovern, *Interim Legal Counsel*
Jason Kane-Seitz, *Director, Office of Non-Discrimination and Title IX*

Finance

Cathy Nadeau, *Vice President and Chief Financial Officer*
Michael Kerstan, *Controller*
Christophe Jorand, *Associate Vice President, Financial Planning and Analysis, Reporting and Business Intelligence*
Michele Billings, *Associate Vice President of Finance Operations*
Nick Mazzuroo, *Associate Vice President, Bursar and Student Accounts*
Tina Gonzalez, *Assistant Dean for Financial Aid*
Michael Dymond, *Director of Financial Planning and Analysis*

Juilliard Annual Supporters

The Juilliard School is deeply grateful to the following individuals and institutions for their gifts in support of performances, educational activities, and scholarships. Please consider making an investment in the future of the performing arts. For more information or to make a gift, contact the Development Office at (212) 799-5000, ext. 278, or development@juilliard.edu.

\$1 Million or More

Jody and John Arnhold
The John Gore Organization
The Jerome L. Greene Foundation
Jerold* and Stephanie Kayden
The Jacques and Margot W. Kohn Foundation
Stephanie and Carter McClelland/
The Stephanie and Carter McClelland Foundation
The John A. Moran Charitable Trust
Carole and John† Moran
Deborah J. Simon
Anonymous

\$500,000-\$999,999

Bloomberg Philanthropies
William Randolph Hearst Foundation
Dr. Carol Stein

\$250,000-\$499,999

Jeff Gates and Mike Moran
Max H. Gluck Foundation
Joan W. Harris/The Irving Harris Foundation
The Heartland Foundation
Beth and Christopher Kojima
Lincoln Center Corporate Fund
Vincent and Anne Mai
Anne Akko Meyers* and Jason Subotky
Jeffrey Seller
Yael A. Taqqu and Jeremy S. Levine

\$100,000-\$249,999

Allen & Company
Sarah Billingham Solomon and Howard Solomon†
Joshua Black
Powell and Nancy Brown
Jeff and Susan Campbell
Rondi Charleston* and Steve Ruchefsky
Chenter Foundation
Julie A. Choi* and Claudio Cornali
Joyce and Barry Cohen
Dan J. Epstein Family Foundation
Ford Foundation
Dr. Jeremy Hein
Thomas Dubois Hormel Foundation/
Marisa I. Hormel Trust
Bruce and Suzie Kovner
Leon Levy Foundation
Terry and Bob Lindsay
James W. McColgan*
John T. McColgan*
Jerome L. Greene Foundation
Rebecca and Tyler Morse
Tram Nguyen and Faiz Ahmad
Judith F. Pisar
Jane Poss and Myron H. Nadel†*
Rajika and Anupam P. Puri
Susan and Elihu Rose Foundation
Sam* and Deborah Rotman
Alec P. Stais and Elissa Burke
Sidney and Florence Stern Family Foundation
Laurie M. Tisch Illumination Fund
The Virginia B. Toulmin Foundation
Matt Walker*
Heather Watts and Damian Woetzel
Richard York
Anonymous (4)

\$50,000-\$99,999

Sarah Arison and Thomas Wilhelm
The Augustine Foundation
Stanley Baumbblatt
Norman S. Benzaquen

The Family of Isabel Stewart Cunningham
Barry Diller and Diane von Furstenberg
Robert Evans Foundation for the Arts
Agnes Gund
Harvard Business School
Jeff Hunter Charitable Trust
Judith A. Kaminski
Terri and Jerry Kohl
Karen and Paul Levy
The Frederick Loewe Foundation
Terry Morgenthaler and Patrick Kerins
Michael R. Osver
The Holly Peterson Foundation
The Fan Fox and Leslie R. Samuels Foundation
The George L. Shields Foundation
The Shubert Foundation
The Robert Craft Igor Stravinsky Foundation
Sidney J. Weinberg, Jr. Foundation
David S. Winter
Anonymous (3)

\$25,000-\$49,999

American Turkish Society
Bank of China U.S.A.
Mary L. Bianco/The Moca Foundation
Dudley and Michael Del Balso
Judy and Jamie Dimon
Joan† and Peter Faber
Barbara and Jonathan File
Barbara Gamm Frenkel*
Ms. Virginia Gambale and Dr. Austin Feeney
John and Ila Gross
Nancy and Bruce Hall
Ralph M. Hamaker
LCU Fund for Women's Education
Edward F. Limato Foundation
Joyce F. Menschel
Robert E. Meyerhoff and Rheda Becker
New York State Council on the Arts
Edward John Noble Foundation
Katheryn C. Patterson and Thomas L. Kempner, Jr.
Galy Portadin*
Julia Raikin
Raymond-Cryder Designated Fund of the Lehigh Valley Community Foundation
Ann Schein Carlyss
Anna Schoen-René Fund at the New York Community Trust
Barbara J. Slifka
Jeremy Smith
Gillian Sorensen
Trine Sorensen and Michael Jacobson
Jerra Spence
The Robert W. Wilson Charitable Trust
Christina Roh and Kevin Yoon
Yichen Zhang
Anonymous (2)

\$15,000-\$24,999

Walter Arnheim and Marsha Rehns
Laurel and Clifford Asness
Barbara and Gary Brandt
Colleen Burlingham
Dr. Andre Clavel Foundation
Georgeann Delli Venneri
Mr. Lawrence Erlbaum
Dr. Kathryn Farley PhD
Seth E. Frank
Candice and John Frawley
Allen R. and Judy Brick Freedman
Keith and Barbara Gollust

Micaela Gunther
The Katzenberger Foundation
Sander and Norma K. Buchman Fund
Alexandra William Foundation
The Family of Zofia and Henryk Szymanski
Karin J. Krueger
Dr. Allen H. Maniker*
Edward McColgan
Sharon Mitchell
James L. Nederlander and Margo Nederlander
Lynn Noble
The Laura Pels International Foundation for Theater
Evelyn and John Popp
Mary and Dan Riew
Mrs. Susan L. Robinson*
Irene Schultz
Paul J. Sekhri
The SHS Foundation
Arleen Spangler
Elliot Susseles and Lisa Kurlantzick
Simon Szykman
Susan and Daniel Thys
Loraine Kent Vichay Memorial Trust
John J. Yarmick
Anonymous (3)

\$10,000-\$14,999

Arlene and Alan Alda
Michelle* and Jonathan Auerbach
Elaine S. Bernstein
Ms. Diana Bersohn
Nicholas Braver/The Ida and William Rosenthal Foundation
Susan Brenner
Drs. Mary and George Campbell
Stuart H. Coleman and Meryl Rosofsky
Family Fund
Consulate General of Greece in NY/PepsiCo
Caroline and Paul Cronson
Bori and Mark Cox
Florence and Paul DeRosa Memorial Fund
Doris Duke Charitable Foundation
Jesse Fink in honor of Milton Fink
(BM '48, double bass)
Eric J. Friedman
Jane Olian and Donna Gill, for Classical Singing and New York in June
Mike and Becky Goss
Jennifer and Bud Gruenberg
PRG - Jeremiah J. Harris
Mark Hsiao* and Howard Koepfel
Edith Polvay Kallas* and Joe Whatley
Barbara and Howard Kaye
Dr. Yvonne Lamy
Yaru Liu
Robert Lobel*, Marjorie Tallman
Educational Foundation
Yo-Yo Ma* and Jill Hornor
Dr. Lee MacCormick Edwards Charitable Foundation
Zoltán and Zoltánné Mágá
Harold W. McGraw Jr. Family Foundation
Tim B. Nelson* and Lisa M. Benavides-Nelson*
Susanna R. Phillips* and David S. Huntington
Craig and Stefanie Pintoff
The Presser Foundation
Elizabeth R. Rea
Richard Rubinstein
Yukari Saegusa*
Mac Schuessler
Susan E. Schuur
Sara A. Singer
Alexander I. Tachmes/Shutts & Bowen LLP
Epstein Teicher Philanthropies
James and Ashley Toth

Juilliard Annual Supporters (Continued)

Alan W. Tudyk*
Mina Tulchinsky
Robert L. Turner
Sedgwick and Pamela† Ward
Alexandra Wheeler and Rocky Rukan
Bradley Whitford*
Lucille and Jack Yellen Foundation
Evan Yionoulis and Donald Holder
Barbara and David Zalaznick
Judy Francis Zankel
Anonymous (5)

\$5,000-\$9,999

RSA
Marshall S. Berland and John E. Johnson†
Jacklyn and Miguel Bezos
Dr. Elliott Bird
Council Member Gale A. Brewer,
the Council of the City of New York
Allison C. Cheung* and Hoylond Hong
Michael Chieffo* and Beth Grant
Sung* and Alicia* Cho
Violet and Christopher Eagan
Allan G. Forsyth
Jocelyn and W.E. Gallinek
Sarah Glazer*
Alberto Goldberg
Mr. Robert Goldberg
Kathleen Hartly Gray*
Arlene† and Edmund Grossman
Gucci
Gulitz Foundation
Deborah A. Guthrie
The Harkness Foundation for Dance
Mary E. Harrigan and Andrew P. Tothy
Bernard Holtzman
Hugo Boss Retail, Inc.
J.C.C. Fund, Japanese Chamber of
Commerce and Industry of New York
Edward and In-ae Kang Foundation
Veda Kaplinsky* and Herbert Light
Keller-Shatanoff Foundation
Dominique Laffont
Alissa Leiser*
Dr. Frayda B. Lindemann
Nancy Long and Marc Waldor
Jerome Lowenthal*
Edward J. Maloney and Richard B.
Kowall
Laura and Alan Mantell
S & L Marx Foundation
Neil A. Mazzella
James and Stephanía McClennen
The Clement Meadmore Foundation
Lynn Mestel* and Hayes Roth
Martin Nickerson

Morris Offit
John R. Philpit
David Pierce
Judy and Jim Pohlman
Joseph and Elizabeth Polisi
Qobuz USA
Sabine Renard
Barbara Ritchin
Janet and Howard Rose
Margitta Rose
Roger and Doris Sant
Judith and F. Randall Smith
Annaliese Soros
Steinway & Sons
Sunrise Senior Living
Jane Tate
Anli L. Tong*
Kristine Jarvi Tyler*
Wilmot Wheeler Foundation
Cody Williams and Maria Flores
Craig S. Williams*
Marsha G. Williams
Zachary Williams
Zelda Williams
Stanley P. Wilson*
Heela Yang* and Seiji Tszuki
Dale Zand
Zhiyong Zhou and Xiaohong Zhang
Anonymous (4)

\$2,500-\$4,999

Hsin-Yun Huang* and Michael K.
Amory*
Nadine Asin
Sonia M. Attkiss
Emanuel* and Yoko* Ax
Casey Bayles and William Jeffrey
Mr. Robert Brenner
Elaine J. Budin
Patrick Cazeau and Veronica
Codrington-Cazeau
Kathryn G. Charles
Beverly and Herbert Chase
Mr. Kenneth H. Chase
Ginger Chinn
Ernest* and Mary Chung
Nancy A. Cohn
Consulate General of the Kingdom of
the Netherlands in New York
Dechert LLP
Jennie DeScherer
Ann and Jonathan DuBois
John Farago
Edgar Franceschi
Helen and Jeffrey Friedman
Gallya Gordon
Alicia Graf Mack

Lynda and Paul Gunther
Sharon B. Gurwitz
Sandra Hess
Omomuki Foundation
G. Penn and Diane Holsenbeck
Nancy Huang-Sommer
Gregory J.* and Julie Jbara
Alan W. Kornberg*
Soyoung Lee
Team Electric
Clayton Long
David Serkin Ludwig* and Bella Hristova
Robert and Bridget Lyons
Ellen Marcus
Eduardo Mestre
Adam Meyer* and Anna Kaplan
Paula Paster Michtom
Investure LLC
Lauren Mitchell
Jazmin Morales and Carlos E. Hernandez
Susan Perri
Ms. Jill Plancher and Mr. Kevin Plancher
Zachary and Lori Pomerantz
Linda Ray
Catherine G. Roberts
Richard A. Rosen and Joyce Silberstang
Scott M. Rosenberg
Lesley and Ted Rosenthal
Dr. and Mrs. Thomas P. Sculco
Inbal Segev Brenner* and Thomas Brenner
Brandon Sherr
Lilian Sicular
Steven P. Singer, MD, and Alan Salzman, MD
Judith and Morton Sloan
Mrs. Lea Yitshaki Soifer*
Sidharth Soni
Weston Sprott
Karen Steinberg
Elise C. Tepper
Champion Systems Integration
Walter F. Verdehr* and Elsa Ludewig-Verdehr
Anthony and Susan Viola
Dr. Ann Walzer
George Wang
Ms. Johanna Weber
Mary Jo Weing
Philippa Weismann
Judy* and Lindley Hoffman
George K. Yin and Mary J. Walter
Mr. Brian D. Zeger*
Anonymous

Listing as of August 27, 2024

† In Memoriam

* Alum

President's Circle

Herbert A. Allen Jr./
Allen & Company
Sarah S. Arison
Jody and John Arnhold
Norman S. Benzaquen
Dan J. Epstein
Josh Evans
Agnes Gund
Marisa I. Hormel
Jerry and Terri Kohl
Karen and Paul Levy
Carol and Michael Marks
Holly Peterson
Judith F. Pisar
Thomas C. Schumacher III and
Matthew White
Sydney H. Weinberg
Anonymous (2)

Global Council

Renée Fleming, *Honorary Chair*

The Chenter Foundation
(Richard and Michelle Chen)
Dr. Ronald Li and Carol Chiang-Li
Terry Morgenthaler
Julia Raiskin
Gillian Sorensen
Trine Sorensen
Jerra Spence
Yichen Zhang

Juilliard Council

Michelle Demus Auerbach, *Chair*

Barbara Brandt
Bori Cox
Eric J. Friedman
John G. Popp
Mary K. Riew
Jeremy T. Smith
Alexander I. Tachmes
James Toth
Mina Tulchinsky
Doug Wu

The Augustus Juilliard Society

The Augustus Juilliard Society recognizes those who have included Juilliard in their long-term plans with a bequest, beneficiary designation, or charitable gift annuity. These gifts help ensure that Juilliard may continue to provide the finest education possible for generations to come. The school expresses its deep appreciation to the following members as well as to those who chose to give anonymously and thus are not listed.

Donald J. Aibel*
Veronica Maria Alcarese
Keiko Ota Alexander* and
Jeffrey Alexander
Sanem Alkan
Virginia Allen*
Sima Ariam
Dee Ashington
Bruce Barnes and Louann Vanfossen
Richard Beales
Yvette and Maurice± Bendahan
Donald A. Benedetti*
Helen Benham*
Greg and Julie Bennett
Elizabeth Weil Bergmann*
Marshall S. Berland and
John E. Johnson±
Benton and Fredda Ecker Bernstein
Leslie Goldman Berro*
Dr. Elliott Bird
Nancy A. Bowen
Susan Ollia Boyd
Mrs. George E. Boyer
Peter A. Boysen
Mark J. Brandfonbrener*
Susan Babbitt Brenner
Nina R. Brill
Ann Marie Brink*
Gene T. Brion
Steven and Colleen Brooks
Carol Diane Brown and Daniel J. Ruffo
Beryl E. Brownman
Craig A. Campbell*
Alan± and Mary Carmel
Nancy and Neil Celentano
Virginia Chakejian
Wendy Fang Chen*
Elizabeth Child*
Julie A. Choi* and Claudio Cornali
Rosemarie Cufalo
Christopher Czaja Sager*
Eugene Davidson± and Eve Barak*
Harrison R.T. Davis
Robert Lee Dean
Stephen and Connie Delehanty
Luis Felipe de Montpensier
Ronald J. Dovel and Thomas F. Lahr
John C. Drake-Jennings
Eugene S. Drucker*
Ryan* and Leila Edwards
Joyce Eskwitt
Eric Ewazen*
Joan± and Peter Faber
Holly L. Falik
Barbara and Jonathan File
Dr.*± and Mrs. Richard B. Fisk
Mary A. Flannery
Barbara G. Fleischman
Judi Sorensen Flom
Ann Marie Smith Forde
Lorraine Fox
John and Candice Frawley
Chaim Freiberg*
William Gati* and Paul Gati*±
Anita L. Gatti*
Thelma and Seymour Geller,
on behalf of Jane Geller
Mordecai Genn
Mark V. Getlein*
John R. Gillespie

Valerie Girard*
Robert Jay Glickman
Ruth J.E. Glickman
Sheryl Gold
Robert and Constance Gottlieb
Jennifer L. Granucci
Arlene± and Edmund Grossman
Miles Groth
Emma Gruber
Leo Guimond*
Ruth Haase
Robert S. Haggart Jr.* and
Stephanie Haggart*
Louise Tesson Hall
Ralph Hamaker
Marilyn H. Hammerman*
Stephen and Andrea Handleman
Judith Harris and Tony Woolfson
Robert G. Hartmann
James S. Hatch*
Ira Haupt II± and Joyce K. Haupt
Robert Havery*
Betty Barsha Hedenberg
Brian J. Heidtke
John Holtzman*
Gerri Houlihan*
Katherine L. Hufnagel
Joseph N. and Susan Isolano
Ellie-May Jackson
Barbara James
Paul Johnston and Umberto Ferra±
Janice Wheeler Jubin* and
Herbert Jubin
Peter H. Judd
Michael Kahn
George*± and Julia Katz
William Kernen
Younghee Kim-Wait
Robert King*
Linda Kobler* and Albert Glinisky*
Elizabeth Groth Kolby
Bruce Kovner
Olivia Kozlowska
Edith Kraft*
Benjamin N. Krevolin*
Yvonne Lamy
Francine Landes*
Julie Landsman*
Steven Lane
Sung Sook Lee*
Paul Richards Lemma and
Wilhelmina Marchese Lemma±
Loretta Varon Lewis± and
Norman J. Lewis
Ning Liang*
In honor of Peter Limon
Jerry K. Loeb
Eileen Lubars*
Chuck Manton
Serena B. Marlowe
Dolores Grau Marsden* and
David Marsden
Gary W. Masters*
Stephanie and Carter McClelland and
The Stephanie and Carter
McClelland Foundation
Joseph P. McGinty
Dr.± and Mrs. N. Scott McNutt
Stephen A. Meyers and
Marsha Hymowitz-Meyers

Paula P. Michtom
Leo±* and Anne Perillo Michuda*
Warren R. Mikulka
Russell Miller and Charlotte M. Meyer
Janis Miranda
Stephen Mittman
Valerie Wilson Morris*
Diane Morrison
Mark S. Morrison
L. Michael and Dorothy Moskovis
Gail Myers
Steven W. Naifeh and
Gregory White Smith±
Anthony J. Newman
Oscar and Gertrude Nimetz Fund
Stephen Novick
Joyce O'Brien
Michael R. Osver
Jane Owens
Celia Paul and Stephen Rosen
Lisa Pelikan*
Andrea Pell Living Trust
Jane V. Perr
Ken Perry*
Lianne Perry
Vincent Petragrani
Stephen M. Pier* and Miki Orihara
Christopher Pilafian*
Elissa V. Plotnoff Pinson*
Fred Plotkin
Judy and Jim Pohlman
Geraldine Pollack
John G. Popp
Thomas and Charlene Preisel
Arthur Press*
Bernice Price
Rajika Puri
Gena F. Raps*
Karen J. Raven
Nancy L. Reim
Susan M. Reim*
Susan D. Reinhart
Madeline Rhew*
Michael Rigg
Leslie Swan Weirman Riley
Douglas Riva*
Lloyd*± and Laura Robb
William D. Robbins
Daniel P. Robinson
Yvonne Robinson*
Donna Romer
Carlos Romero and
Joanne Gober Romero
Linda N. Rose*
Susan W. Rose
Ira Rosenblum*
Sam* and Deborah Rotman
Lynne Rutkin
Joan St. James*
Riccardo Salmons
Michael and Diane Sanders
Anthony Scelba* and
Victoria Stewart Scelba*
Kenneth Schapin
Nancy Schloss
Shelby Evans Schrader± and
John Paul Schrader
Irene Schultz
Joan Gianna Settin
David Shapiro

The Augustus Juilliard Society (Continued)

Robert B. Sharon*
Robert D. Sholiton
Arthur T. Shorin
Sara A. Singer
Steven P. Singer and Alan Salzman
Ethan A. Silverman*
Bruce B. Solnick
Carl Solomon Sr.
Evelyn Sun Solomon*
Gary and Roberta± Soren
Margaret B. Steele*
Nancy E. Steltmann*
Sally T. Stevens
Robert C. Stevenson
Judy Stewart
Henry and Jo Strouss

Cheryl V. Talib
Thomas W. Thompson
Tom Todoroff* and Emily Moulton
Anli Lin Tong*
Marie Catherine Torrisi
Marta Vago*
Walter* and Elsa Verdehr
Paul Wagenhofer
Alberto and Paulina A. Waksman
Stanley Waldoff*
Jessica Weber
Catherine White*
Miriam S. Wiener
Robert Wilder± and Roger F. Kipp
Alice Speas Wilkinson*
Yvonne Viani Williams

Margaret S. Williamson
Clark* and Sally Ann* Wilson
Stanley P. Wilson*
Theo George Wilson
Elizabeth R. Woodman
Edward Yanishefsky
John J. Yarmick
Lila York
And 117 anonymous members,
including 51 alumni

As of August 19, 2024

* = Alum
± = In Memoriam

For information about becoming a member of the Augustus Juilliard Society, please visit plannedgiving.juilliard.edu, call (212) 799-5000, ext. 7152, or write to lpadua@juilliard.edu. Have you included Juilliard in your planning? Please let us know so that we may thank you and recognize you as a member of the Augustus Juilliard Society.

Estates and Trusts

Juilliard is profoundly grateful for the generous gifts received from the following **Estates and Trusts** between July 1, 2023 and August 27, 2024. We remember the individuals who made these gifts for their vision in supporting future generations of young performing artists at Juilliard.

Jere E. Admire Charitable Trust
Harold Alderman Trust
Estate of John S. Aler
Estate of Lucille Apar
Estate of Anne L. Bernstein
Trust of Sonia Block
Betty and Daniel Bloomfield Fund
Trust of Elaine Bukantz
Trust of Annette Burford
Trust of John Dexter Bush
Estate of James L. Buttenwieser
Estate of Corradina Caporello
Peter J. Cohn Charitable Remainder Unitrust
Estate of Lito De Manalang
Estate of Stefan Draughon
Trust of Alice Shaw Farber
Fima Fidelman Trust
Dora L. Foster Trust
Trust of Sherri Fox
Estate of Michael S. Gallo
Estate of Rosalind Guaraldo
Estate of Michael H. Haberkorn
Estate of James S. Hatch
Nancy B. Hatz and Russell C. Hatz Fund
William J. Henderson Memorial Fund
Karolyn Kirksey Holler Trust
Frances B. Hoyland Trust
Trust of Edward Jabes

Estate of Donald Lee Jonas
Hamilton H. Kellogg and Mildred H. Kellogg Charitable Trust
Irene T. Land Trust
Estate of Billie R. Mahoney
Estate of June Reig Maxwell
Beatrice Ohanessian Revocable Trust
Sita Ohanessian Revocable Trust
Estate of Angela Querze
Estate of Hans R. Reinisch
Lance B. Roepe Trust
Trust of Lillian Rogers
Howard and Ethel Ross Trust
Estate of Ann J. Rudick
Estate of Harvey Salzman
Nancy Schloss Living Trust
Trust of Harold C. Schonberg
Estate of Geraldine Shapiro
Estate of Barbara Thompson Slater
Arline J. Smith Trust
Janice Dana Spear Trust
Barbara H. Stark Living Trust
Estate of Lynn Steuer
The Tomoko Trust
Estate of Beverly S. Travis
Estate of Mary H. Vinton
Miriam Warner Revocable Trust
Trust of Helen Marshall Woodward
Irene Worth Fund for Young Artists